

# 2025 Annual Report



## TABLE OF CONTENTS

2	Introduction
3	Tribute to Beverly Balwin OAM
4	President's Report
5	Funding & Other Income
6	Treasurer's Report
7	Staffing Report
8	Major Award Nominations
9	Gosford Hub Activities Report
10	Phoenix Youth Report
11	Wyong Hub Activities Report
12	Financial Counselling Report
13	Current Board of Management

## ALWAYS WAS, ALWAYS WILL BE ABORIGINAL LAND



*Wyong Neighbourhood Centre acknowledges the Darkinjung people, the traditional owners and custodians of the land on which we live and work and pay our respects to Elders past, present and emerging.*

# INTRODUCTION

---

*Kylie Hopkins*  
- Manager

The past twelve months at Wyong Neighbourhood Centre have been defined by both challenge and hope. From July 2024 to June 2025, we witnessed the realities of a community under pressure—more people than ever before presenting to our services in crisis, and an alarming rise in the number of individuals and families sleeping rough around our Wyong site. Each day, we have met people in need of not only food and emergency relief, but also housing advocacy, mental health support, domestic violence assistance, and pathways through the justice and financial systems. The complexity of the support required has grown significantly, yet so too has our determination to respond with compassion, resourcefulness, and collaboration.

Despite these pressures, the year has been rich with achievement. At our Wyong Hub, our team delivered over 4,800 sessions of practical emergency relief and supported people through more than 40 complex referral appointments. These figures only hint at the countless moments of care and connection that occurred in our daily work—sharing a meal, walking alongside someone through a court process, or sitting with families as they navigate financial hardship.

Our Gosford Hub continued to strengthen its role as a safe and trusted place in the heart of the Gosford CBD, offering crisis intervention, social programs, and cultural initiatives. Partnerships flourished, such as our ongoing collaboration with **Chertsey Primary School's breakfast club** and **Parents Connect program**, which nurtured a sense of belonging for local families. A highlight was the development of **Yarn Together**, an evidence-based program co-created with University of Newcastle students, designed to build cultural connections with First Nations people, tackle homelessness, and foster community resilience.

Phoenix Youth Support Service faced a challenging local environment, with a worrying rise in violent crime among young people across our catchment area. In response, staff worked closely with police, Youth Justice, and schools to provide advocacy and practical assistance for both victims and offenders. New initiatives, including the **Mind Craft** program young male-identifying participants transitioning into high school, demonstrated how creative, evidence-informed approaches can address anti-social behaviour and promote well-being.

We were also proud to launch **Thrive With Me** at **Warnervale Public School**—a program for tween students focused on gratitude, mindfulness, resilience, and connection. The feedback from children, families, and teachers was overwhelmingly positive, and we are excited to see this initiative grow.

Our financial counselling service continued to be a lifeline for many, assisting more than 100 people and securing over **\$140,000 in debt waivers** for some of our community's most vulnerable members. Alongside one-on-one sessions, the program reached diverse groups with education on budgeting and gambling harm, and we are thrilled to have secured funding through to 2030.

None of these achievements would have been possible without the tireless efforts of our staff, volunteers, and students. From long-term team members receiving Rotary Service Awards, to the 28 high school students and 24 tertiary placements who brought fresh energy and ideas, every contribution has helped us expand what we can offer. The spirit of generosity and collaboration remains at the heart of WNC.

This year has reminded us that while the challenges are real and often confronting—rising homelessness, cost-of-living pressures, and increasingly complex crises—so too is the strength of our community. Every program, every partnership, and every act of kindness demonstrates that when people come together, meaningful change is possible.

As we look forward, Wyong Neighbourhood Centre remains committed to adapting to emerging needs, advocating for those without a voice, and building stronger, more connected communities. We extend our heartfelt thanks to all who have supported us this year—our partners, funders, staff, volunteers, and community members. Together, we will continue to stand alongside those doing it tough and create pathways towards a more hopeful future.



# TRIBUTE TO BEVERLEY JUNE BALDWIN OAM

---

30th June 1936 to 2nd July 2025

The Wyong Neighbourhood Centre family remembers and honours the extraordinary life and contribution of Beverley June Baldwin OAM.

Bev's story is one of service, resilience, and deep compassion. Born in Orange in 1936, she grew up during the hardships of the war, learning early the values of responsibility and care for others.

Whether knitting socks for soldiers as part of the Junior Red Cross or helping neighbours with shopping and child-minding, Bev's instinct was always to give. That spirit never left her.



Her early career as a nurse showed her dedication to people's well-being, but it was her move to the Central Coast—bringing with her two sons and a determination to start anew—that marked the beginning of her extraordinary impact on our community. After returning to nursing at Gosford District Hospital, she followed her calling into social welfare, graduating with honours in 1983. Soon after, she became Co-ordinator of Wyong Neighbourhood Centre, guiding it from the humble beginnings of **Marion's Place** into the vibrant, multi-service organisation we know today.

Bev did far more than her role required. In the early years, when funding was scarce, she gave 20 extra hours a week of her own time so that essential programs could take root. She never wanted people in need to wait for help simply because resources were limited. Under her leadership, WNCI grew to deliver childcare, youth centres, neighbourhood aid, outreach projects, emergency relief, community arts, and programs for disadvantaged families and early school leavers. Many of the services that today form the backbone of WNCI exist because of her vision and determination.

Her extraordinary contribution was recognised with the **Rotary Pride of Workmanship Award (1986)**, a **Certificate of Outstanding Services in the Community from Wyong Shire Council (1990)**, and the **Order of Australia Medal (1996)**. Yet Bev never sought recognition for herself. Her focus was always on the people—those doing it tough, those without a voice, and those who simply needed someone to walk beside them.

Bev's influence reached far beyond WNCI. She contributed to countless committees and organisations, from the Wyong Chamber of Commerce to the Wyong Shire Emergency Relief Forum, always working to ensure the community had the services, advocacy, and opportunities it deserved. Even after retiring, Bev continued to give her time, energy, and wisdom until her health declined around 2020.

For those who worked alongside her, Bev was more than a manager—she was a mentor, an advocate, and often the quiet strength behind so many community initiatives. She had a remarkable ability to see potential in people and in ideas, and then to bring them to life. Her legacy is written not just in awards or reports, but in the lives of the thousands of families and individuals who found hope, dignity, and support through her work.

On behalf of the Board, staff, volunteers, and community of Wyong Neighbourhood Centre, we remember Bev with love, admiration, and gratitude. She was one of the true builders of WNCI, and her spirit continues to live on in everything we do. Every time a person finds comfort at our centres, every time a young person discovers opportunity, and every time a neighbour helps a neighbour, we are walking in the path she laid down.

Bev's life reminds us of what is possible when one person commits wholeheartedly to their community. For that, and for so much more, we thank her.

## MESSAGE FROM THE PRESIDENT

---

On behalf of the Board, I extend heartfelt thanks to all our current members, and acknowledge those who have completed their service with us this year.

We warmly welcomed some new members, **Alex Kakalanos**, **Greg Colby**, and **Jayden Delbridge**, whose skills and perspectives have added to the breadth and strength of our governance team. Their experience has brought valuable insights into finance, community engagement, and local networks, ensuring that our Board reflects a diversity of strengths.



We also acknowledge the contributions of those who have stepped down. **Rachael Glasson** resigned during the year, and **Greg Colby** has chosen not to continue into the new term. Importantly, we thank **Monique Cardon** for her dedicated service over several years, including as President from 2022–24 and as Secretary in 2024–25. Monique's leadership and commitment have been deeply valued, and her legacy of service continues to shape our work. Looking ahead, we are pleased to confirm that we will be welcoming **Garry Valenzisi** to the Board following this year's AGM, bringing further skills and community experience to our team. I would also like to recognise all our **Life Members**, especially **Vera Brown**, whose enduring connection to our organisation continues to inspire us.

The past year has tested our communities in profound ways. Rising homelessness, youth crime, and cost-of-living pressures have placed enormous strain on individuals and families. These challenges demand not only compassion but also courageous leadership. As a Board, our role is to ensure that Wyong Neighbourhood Centre Inc. (WNCI), Phoenix Youth Support Service (PYSS), and the Gosford CBD Community Hub (GCCH) remain strong, sustainable, and responsive to these realities.

We have been proud to see our services adapt and innovate, guided by our staff's extraordinary commitment and the generosity of our volunteers and students. The Board was especially delighted to see recognition of this dedication through community awards. We congratulate **Chris Dryden** on receiving a Westfield Local Hero Award, and we celebrate the Rotary honours bestowed on our long-term volunteers, **Lyn Edwards**, **Diane Castner**, and **Mark Harland**. Their contributions embody the values of service, resilience, and connection that define our organisation.

I also want to acknowledge our Manager, **Kylie Hopkins**, whose leadership has been central to navigating the challenges of this year. Kylie's steady guidance and commitment to collaboration have supported both the Board and our services. Her work in leading the team, and in empowering our Team Leaders—**Chris at Phoenix**, **Kim at Gosford**, and **Megan at Wyong**, along with **Carly who heads the Financial Counselling program**—has been vital in strengthening our ability to respond to community need with professionalism, compassion, and creativity.

Looking forward, the Board recognises that systemic issues—particularly the housing crisis and increasing pressures on young people—require more than local service delivery. They call for stronger advocacy, collaboration with partners, and active engagement with government at all levels. We are committed to amplifying the voices of those most affected, ensuring that their stories shape policy and drive change.

As we enter the coming year, the Board's priorities will be to strengthen our governance, deepen partnerships, and champion community-led solutions to homelessness, youth crime, and social disadvantage. While the challenges are real, so too is our belief in the power of collective action. With the dedication of our staff, volunteers, and supporters, we remain confident that Wyong Neighbourhood Centre will continue to be a place of safety, hope, and transformation.

Thank you for standing with us.



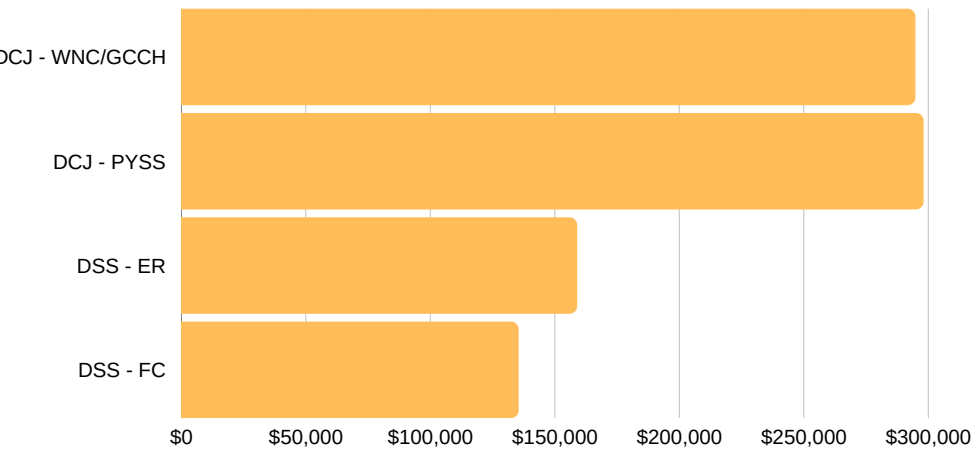
# FUNDING & OTHER INCOME

DCJ	Department of Communities & Justice
WNC	Wyong Neighbourhood Centre
GCCH	Gosford CBD Community Hub
PYSS	Phoenix Youth Support Service
DSS	Department of Social Services
ER	Emergency Relief
FC	Financial Counselling

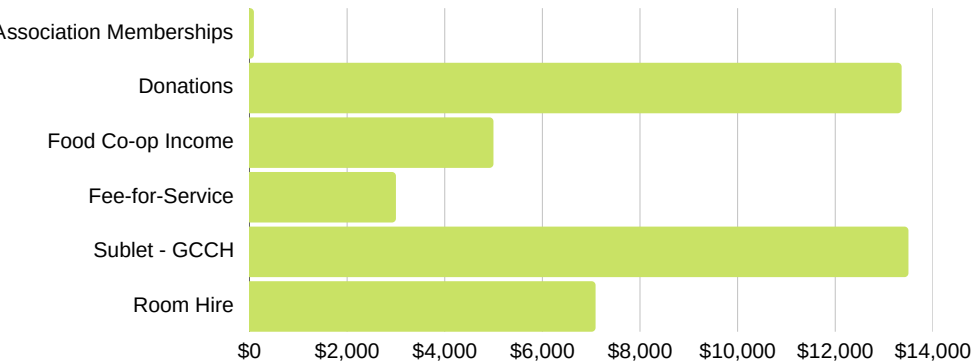
\$930,395

TOTAL INCOME FOR 2024-25

## SOURCES OF FUNDING (GRANTS)



## OTHER INCOME (COMPARED)



### STAFF PROFILE



SARAH WALTERS

Financial Administration Assistant

#### QUALIFICATIONS

Cert III Business Administration  
Cert III Accounting (including MYOB)

5.5 years of service at Wyong Neighbourhood Centre

## TREASURER'S REPORT

---



Wyong Neighbourhood Centre Inc. remains in a sound financial position.

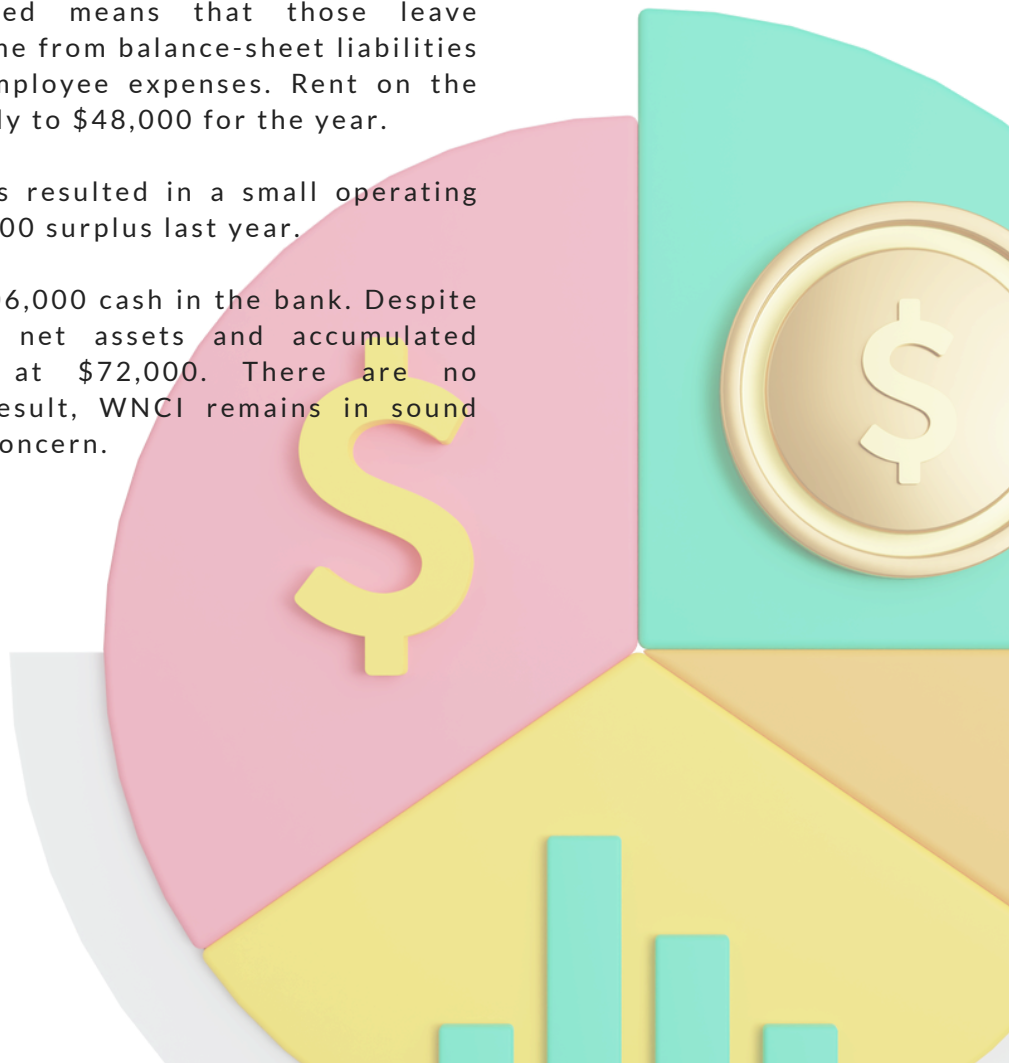
The income and balance sheet statements for the 2024-25 financial year show a largely stable financial picture with income, expenses, assets and liabilities consistent with the budget.

Our revenue consists predominantly of state and federal grants, totalling about \$887,000, up 1.8% from the prior year. While these grants have been generally stable, the allocations we were recently advised for financial counselling and some other programs have been reduced, resulting in some necessary reductions in staff hours in the current financial year.

Our largest expense are employee salaries and benefits of \$732,000 for the 2024-25 financial year, up 12% from the prior year. However, the changes in the way that portable long-service leave is handled means that those leave provisions are shifting over time from balance-sheet liabilities to be paid out as ongoing employee expenses. Rent on the Gosford Hub increased modestly to \$48,000 for the year.

The higher employee expenses resulted in a small operating deficit of \$2,018, after a \$16,000 surplus last year.

WNCI ended the year with \$206,000 cash in the bank. Despite the small operating deficit, net assets and accumulated reserves remained healthy at \$72,000. There are no contingent liabilities. As a result, WNCI remains in sound financial condition as a going concern.



# Kylie Hopkins

## STAFFING REPORT

The past 12 months have seen stable staffing levels, with no changes to permanent roles. However, there have been some adjustments to job roles and responsibilities.

Most notably, Megan has successfully transitioned into the role of Wyong Hub Coordinator. Her position mirrors Kim's role in Gosford, overseeing Hub activities and daily services, supervising students, and working with local support services to coordinate referrals for community members.

In 2024, students Navpreet Kaur and Stephen Patterson joined the paid team part-time to support Megan with Emergency Relief services.

Following their placements in June, Semester 1 2025 Social Work students Jayde, Ruby, and Alex have recently joined our Casual Staff pool.

We acknowledge and celebrate the contributions of all staff and volunteers—especially Di, Mark, and Lyn, who received Rotary Community Service Awards, and Kim and Megan, who were recognised with the Rotary Bob Ward Vocational Awards.



## TERTIARY STUDENT PLACEMENTS

Alex Fittler - Wyong Hub  
Amanda Davies - Wyong Hub  
Ashleigh Lieve - Gosford Hub  
Ashmita Thapa - Gosford Hub  
Bawanpreet Singh - Wyong Hub  
Chelsea Dickson - Financial Counselling  
Cheyenne Watkinson - Wyong Hub  
Dani Matthews - Wyong Hub  
Emika (Emi) Stranack - Gosford Hub  
Harpreet Singh - Wyong Hub  
Jayde vanTongeren - Wyong Hub  
Kiranjot Kaur - Wyong Hub  
Kobe Lowe - Wyong Hub  
Manisha Devkota - Gosford Hub  
Maya Roudy - Wyong Hub  
Millie Talbot - Wyong Hub  
Peta Williamson - Wyong Hub  
Rhiannon (Rio) Leatham - Wyong Hub  
Ruby Heron Little - Gosford Hub  
Rupak Neupane - Wyong Hub  
Sabita Chhetri - Wyong Hub  
Sharon Offer - Wyong Hub  
Soumit (Sam) Banerjee - Wyong Hub  
Zahli Mckellar - Wyong Hub

## SECONDARY STUDENT PLACEMENTS

In addition to our tertiary students, we also hosted 28 high school students...

St Peter's College (15)  
Mackillop Catholic College (5)  
Wadalba Community School (7)  
Henry Kendall High School (1).



## STAFF PROFILE

### KYLIE HOPKINS

Manager/Executive Officer

### QUALIFICATIONS

Diploma in Community Services

8 years of service at Wyong Neighbourhood Centre Inc.



## CURRENT STAFF

Kylie Hopkins  
Manager

Sarah Walters  
Financial Admin Assistant

Megan Maher  
Community Referral Worker

Kim Pemberton  
Hub Coordinator

Christopher Dryden  
Phoenix Team Leader

Helen Drury  
Youth Worker

### CASUAL INTAKE & ASSESSMENT STAFF

Stephen Patterson  
Jayde van Tongeren  
Navpreet Kaur  
Ruby Heron Little  
Alex Fittler

## CURRENT VOLUNTEERS

Mark Harland  
Paul Fuller  
SECONDBITE

Diane Castner  
Judy Greentree  
Elisabeth McClelland  
Jack Koush  
Jenny Cenere  
FROZEN MEALS PROGRAM

Carolyn Hay  
Craig McGregor  
Elyse Gough  
Lyn Edwards  
GCCH FOOD CO-OP



## MAJOR AWARD NOMINATIONS

---



This year we were honoured to have Chris Dryden nominated for the Westfield Local Heroes program. This recognition celebrates people who make an extraordinary contribution to their community, and Chris's nomination is a reflection of the dedication, compassion, and leadership he demonstrates every day in his work with Wyong Neighbourhood Centre Inc.

Chris has consistently gone above and beyond to make a difference over more than 20 years with this organisation. His ability to bring people together, offer practical support, and inspire others to take part has had a lasting impact on our community.

We are thrilled that Chris has been named a finalist in the 2025 Westfield Local Heroes. As a finalist, Chris and our organisation will share in the prize money pool. Each finalist organisation receives a **\$5,000** grant, and should Chris be selected as the overall Local Hero for our Westfield centre, this grant will increase to **\$20,000**.

The community voting process is now complete, and we eagerly await the outcome. Regardless of the final result, Chris' recognition as a finalist is already a win for our organisation and community. It highlights not only his personal commitment but also the strength of the work being done through Phoenix Youth Support Service.

Chris' journey reminds us that heroes are often those who quietly dedicate themselves to others, and we are proud to celebrate his achievements in this year's Annual General Report.

In addition, Wyong Neighbourhood Centre was nominated for the Awards Australia Foundation Health and Wellbeing Award in 2025. While the results have not yet been announced, we are hopeful of being named a finalist once again.



The Health and Wellbeing Award recognises individuals, communities, and organisations across the State who are committed to improving the health and wellbeing of their local community. It celebrates those who passionately and selflessly provide support, guidance, encouragement, assistance, or professional services to improve access to health services or support. These people offer hope, inspiration, and voluntary assistance to individuals who need support and networks to improve their quality of life. The Award acknowledges the services, efforts, actions, and positive input provided by volunteers, carers, and health professionals, recognising how they foster a sense of community spirit that enhances the quality of life for those who depend on them.

Last year, we were proud semi-finalists in the Synaco by Synergie Safety Award, which acknowledged our efforts to create safe, inclusive spaces for the people we serve. This achievement, combined with our ongoing nominations, demonstrates the growing recognition of our organisation's contribution across multiple areas of community support.

Collectively, these honours highlight both the dedication of our staff and volunteers and the trust our community places in us. Each nomination and award strengthens our ability to advocate for local needs, attract resources, and extend our impact.

## GOSFORD HUB ACTIVITIES REPORT

Over the last twelve months at the Gosford CBD Community Hub, we have continued to provide vital support to vulnerable individuals and local families. Offering short-term crisis intervention, access to essential resources and providing referrals to other specialised services. The hub has strengthened its reputation as a trusted Community Centre in the heart of the Gosford CBD. We have delivered a wide range of activities that support the wellbeing of our local community members. Our activities have fostered social connection; we have empowered those facing hardship and have actively engaged with our local community by attending large scale community events.

Our strong and valued partnership with Chertsey Primary School has continued to thrive this year, reinforcing our shared commitment to supporting local families. We have maintained our support of the school's breakfast club, which has been going since 2022. In addition, we successfully facilitated the Parents Connect program onsite at the school, creating a safe inclusive space where parents could come together socially, share experiences, and relax with art and craft activities. The program fostered a strong sense of community among families, helping parents feel more connected and supported both within the school and the wider community.

A major highlight was collaborating with a group of fourth-year social work students from the University of Newcastle to develop an evidence-based program. The project is titled Yarn Together and it is an initiative that focuses on building cultural connections with our First nations community, tackling homelessness, enhancing mental health outcomes, and fostering community ties. A group project where participants can come together and learn how to knit or crochet blankets that will be donated to local services that support homelessness. We hope to run this program in the near future.

Our dedicated long-term volunteer Lyn Edwards, received the Peter Turnbull Community Service Award from the Gosford Rotary Club in recognition of her commitment to volunteering.

We have been facilitating the Gosford Kids Club afterschool activity at the Uniting Church Hall in Gosford. This is a weekly program, that is a free and fun filled afternoon. It's attended by four to five families that we currently support at the hub. The children have formed strong bonds of friendship and some of the parents have connected socially outside of the group.

The hub proudly participated in the Central Coast Reconciliation Gathering with Coast Shelter. This year the event attracted huge numbers and the walk went from Coast Shelter to the mariners Stadium. It was a fantastic event that highlighted our rich First Nations Culture and History. We also attended the Uniting Homelessness Connect Day at Gosford race course. This event was also well attended by other services and local community members.

Overall, the hub has had another successful year that has been marked by resilience, compassion and meaningful impact for our community members. This would not be possible without our committed and dedicated volunteers who are an integral part of our service. Our student placements also contribute to support our service delivery and continue to enhance our community hub.

### STAFF PROFILE



**KIM PEMBERTON**

Gosford CBD Community Hub

### QUALIFICATIONS

Bachelor of Fine Art

7 years of service at

Wyong Neighbourhood Centre



## PHOENIX YOUTH REPORT



What a year it has been! Over the past 12 months PYSS and WNC have seen a great many changes in the culture of the community and service users alike.

Service provision was mildly affected due to the temporary relocation of WNC and once again we had to learn how to adapt and provide service on the fly, which thankfully due to staff, students and management, was handled with as few mishaps as possible which speaks to the strong bonds and resilience of the team at WNC.

PYSS were able to offer Supports from multiple locations over the year including Schools, client's homes, our Watanobbi and Wyong office, community stalls as well as the community shed and of course from the street level to young people aged 12-24 years in the Community.

Our local Community which spans from Wyong around the lake to North Entrance and then back around to Gorokan, following the pacific highway back to Wyong has seen a massive increase in violent crime over the 12 months and PYSS staff have been working with Police and Youth Justice organizations to support both offenders and victims by offering support through court, Youth Justice Outcome planning meetings, case management and advocating for young people to access victims of crime services.

PYSS staff got the opportunity to create new programs for local schools and piloted the first edition of the Mind Craft program, a peer support and mindfulness program (written by PYSS staff) for boys aged 11-12 and transitioning to high school which was originally designed due to an increase in reported anti-social and toxic behaviours the boys were displaying at school.

PYSS have had the pleasure of hosting stalls and being involved in community events throughout the year, including the Central Coast NAIDOC event, Uniting's Homelessness Day, and Community Hub days, Love Lanes, Youth Week as well as Council and THE Y holiday programs.

We have exceeded our mandated targets and obligations and still we are inundated with young people in need of support, we thank WNC and all Staff and management for your ongoing support and as they say "it takes a village to raise a child" and we are fortunate to have a great village!

## STAFF PROFILES



**CHRIS DRYDEN**  
Senior Youth Worker

**QUALIFICATIONS**  
Cert IV Community Services  
(Youth work)

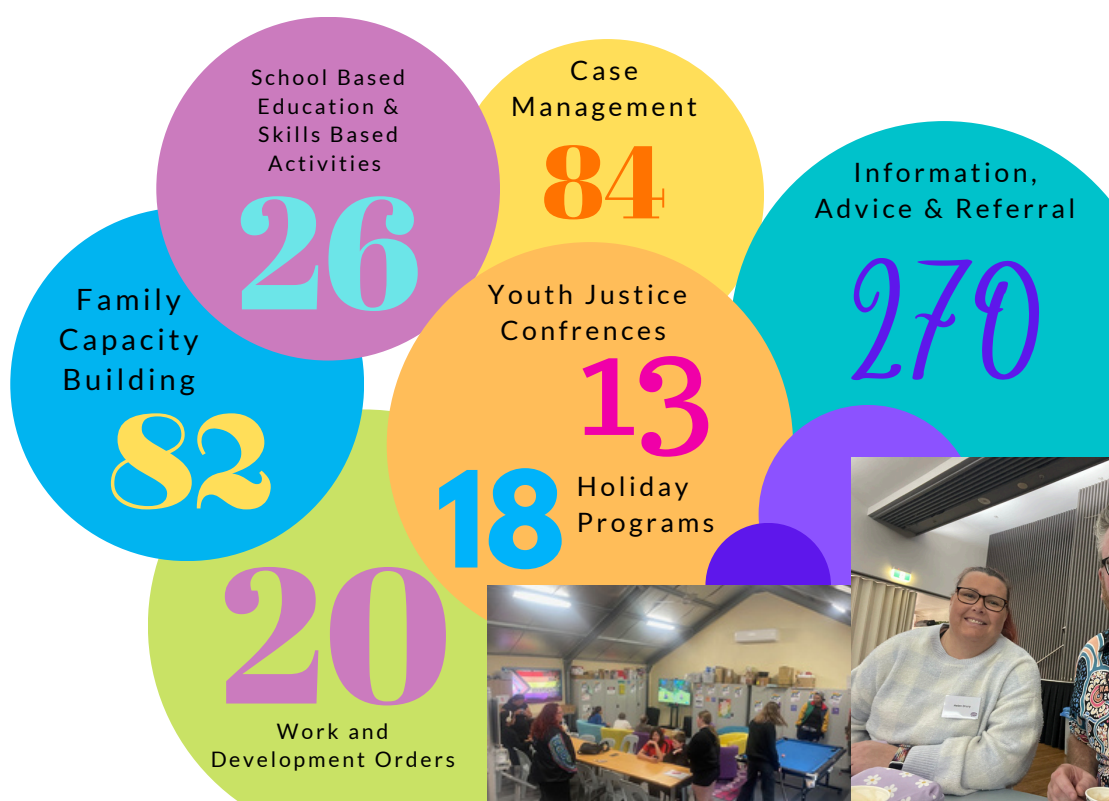
20 years of service  
at Wyong Neighbourhood Centre  
and Phoenix Youth Support  
Service



**HELEN DRURY**  
Youth Worker

**QUALIFICATIONS**  
Cert IV Community Services

5.5 years of service at Wyong  
Neighbourhood Centre and  
Phoenix Youth Support Service





## WYONG HUB ACTIVITIES REPORT

Over the past financial year, the Wyong Hub has continued to support the local community through what's been another tough year for many. With the rising cost of living and increased demand, we've stayed busy providing practical support to people doing it tough. This year, we delivered over 4,800 sessions of emergency relief, everything from food, toiletries and rent support to clothing, frozen meals, and help with bills. We also supported people through more than 40 complex referral appointments, helping them access housing, mental health support, domestic violence services, and more.

At times, the work has been challenging, especially with our temporary relocation to Watanobbi Community Centre, but our focus has stayed on what matters most: providing consistent, compassionate support for those who need it.

This year we were privileged to host another large number of student placements. We hosted 7 Bachelor of Social Work students, 2 Diploma of Community Services students, 2 Bachelor of Social Science students, 1 Bachelor of Community Services student, and 26 high school students on varied work placements. These students brought fresh ideas, enthusiasm, and helped us expand what we were able to offer.

Our work with students also led to something new and probably one of the biggest highlights of the year, the creation of Thrive With Me, a program designed for tween aged primary school students, which we were able to deliver at Warnervale Public School. Thrive with me focused on gratitude, mindfulness, resilience, and growth, the program brought together kids who didn't usually spend time together. By the end, real friendships had formed and the feedback from families and teachers was incredibly positive. We're excited to build on this in the future.

We've continued to be involved in community events throughout the year, including the Central Coast NAIDOC event, Uniting's Homelessness Day, and Community Hub days. These are great opportunities to raise awareness about what we do and connect with others doing important work in the community.

We hosted a number of small activities at the centre over the past year that helped bring people together in simple but meaningful ways. Roundabout Circus joined us during the January school holidays to run a fun workshop for local kids, teaching them basic circus skills. We held a Taste of Harmony event, sharing different cultural meals with community members each day, and wrapped up the year with a relaxed end-of-year celebration. These are just a few examples of the many little moments that brought people together, offered a sense of belonging, and reminded us of the power of community connection.

Looking to the year ahead, we remain committed to growing our impact, strengthening community connections, and continuing to support those in need.

### STAFF PROFILE



**MEGAN MAHER**

Community Referral Worker -  
Wyong Hub Coordinator

### QUALIFICATIONS

Diploma in Community Services

5.5 years of service at  
Wyong Neighbourhood Centre



### PEOPLE ASSISTED WITH SERVICES OR ACTIVITIES IN 2024-25

**1197**

Information  
Advice  
Referral

Emergency  
Relief

**796**

**45**

Other  
Programs &  
Activities

Christmas  
Activities &  
Hampers

**98**

**45**

Kids  
activities &  
programs

Community  
Days

**697**



## FINANCIAL COUNSELLING REPORT

This last year the Financial Counselling Program has delivered information about budgeting, debt and harmful gambling to the community across a range of target groups with different backgrounds, ages and abilities.

The program has maintained the professional accreditation required to provide the service and received news that the funding will continue for another 5 years to 2030.

The service has assisted over 100 people this last year with over \$140,000 of debt waived for those most vulnerable in our community.

Highlights from the last year were the Financial Counselling Conference in Adelaide, Connect Day for vulnerable people, Gambling Harms Awareness Week and internal team building activities.

The program has partnered with a number of organisations to deliver financial counselling to their client groups and plans to continue with these connections to improve accessibility of the service.

Staff in the service are continuously motivated by the positive results and feedback from people accessing the service with a sample of the feedback received below.

"Thank you so much!  
Your help has been  
invaluable"

"I wouldn't have  
known what to do  
or where to turn if it  
wasn't for you"

"Thank you, for everything, I honestly know that, with out  
your support we wouldn't be where we are today. You are  
amazing and non judgemental and very supportive"

"That is phenomenal! This is why I refer to you – always  
work magic. We really appreciate it"

"Thanks so much. I've really appreciated all of your support  
& assistance with everything. You've taken a big weight  
and stressors off me and my familys' shoulders"

# 101

PEOPLE  
ASSISTED

# 861

SESSIONS  
CONDUCTED

## STAFF PROFILE



**CARLY ROBINSON**

Financial Counsellor

### QUALIFICATIONS

Bachelor of Social Work  
Diploma in Community Services  
(Financial Counselling)

5 years of service at  
Wyong Neighbourhood Centre



**DEBT WAIVED THIS FINANCIAL YEAR**  
**\$140,179.16**





# CURRENT BOARD MEMBERS

Full board profiles can be accessed by clicking the name of the person

 <p><b><u>LEANNE EDWARDS</u></b> President/Chairperson</p>	 <p><b><u>MONIQUE CARDON</u></b> Secretary</p>	 <p><b><u>HEIDI RICHARDS</u></b> Treasurer</p>
 <p><b><u>ADRIENNE KADWELL</u></b> Board Member</p>	 <p><b><u>ALEX KAKALANOS</u></b> Board Member</p>	 <p><b><u>JAYDEN DELBRIDGE</u></b> Board Member</p>
 <p><b>GREG COLBY</b> Resigned - August 2025</p>	 <p><b>RACHAEL GLASSON</b> Resigned - March 2025</p>	 <p><b>POSITIONS VACANT</b> for 2025-26</p>